

O530 NEW



BASIC VERTICAL LIFT-OFF HINGE

Material:

(1-2) Die-cast zamak alloy (zinc, aluminium and copper alloy).

Surface finish:

Light sandblasting.

Colour:

(01) Black epoxy powder coated, (RAL 9011).

(Z) Standard blue galvanising.

Inserts:

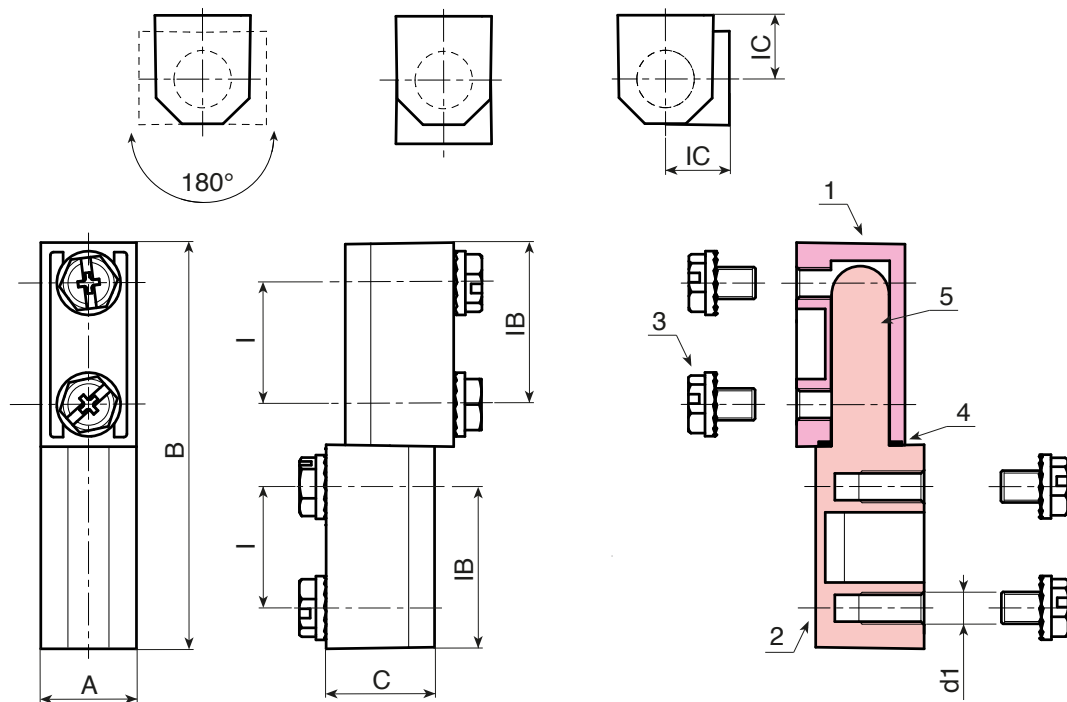
(3) 4 zinc-plated steel screws M5x6 with toothed lock washer.

(4) Black oxide treated spacer washer.

(5) Moulded zamak pivot pin.

SPECIAL REQUESTS:

- On request and for special quantities (100 pieces) the hinge can be supplied with a stainless steel (Aisi 304) pivot pin.



Black coated version code **01**

art.	I	IB	IC	A	B	C	d1	g
O530019.ZM0501	19	25,5	10	14	64,5	17	M05	86

Galvanised version code **Z**

art.	I	IB	IC	A	B	C	d1	g
O530019.ZM0501	19	25,5	10	14	64,5	17	M05	86