

O431



FLAT HINGE WITH THREADED STUDS

Material:
Reinforced polyamide.
Oils and greases resistant.

Surface:
Satin.

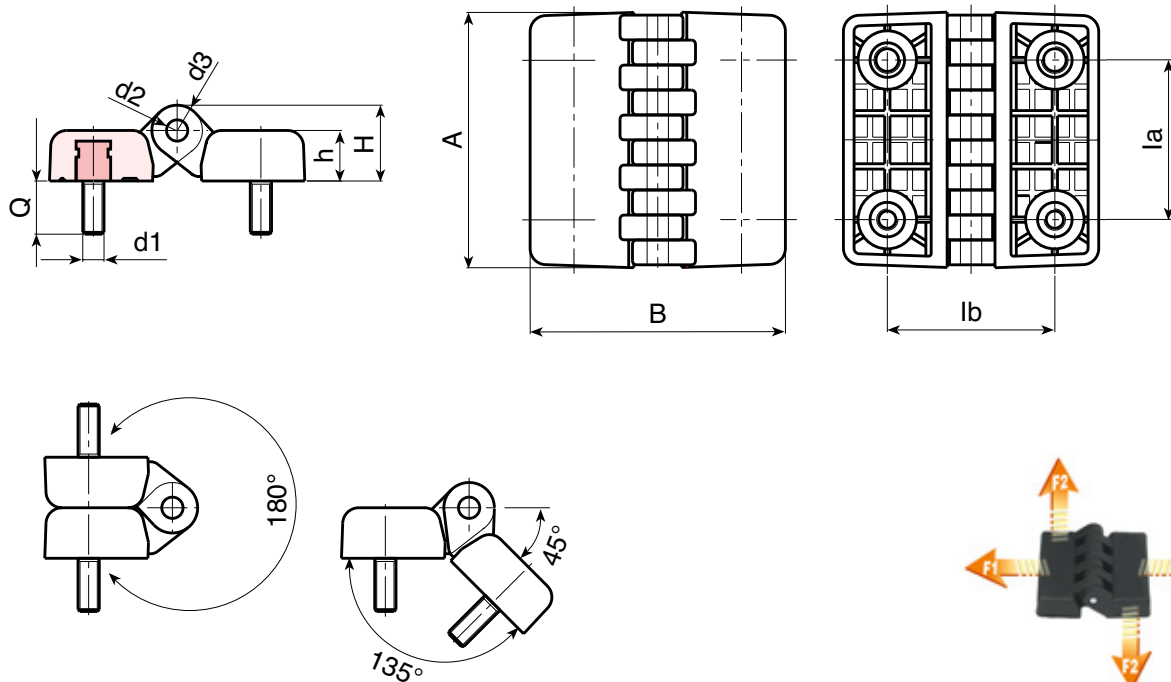
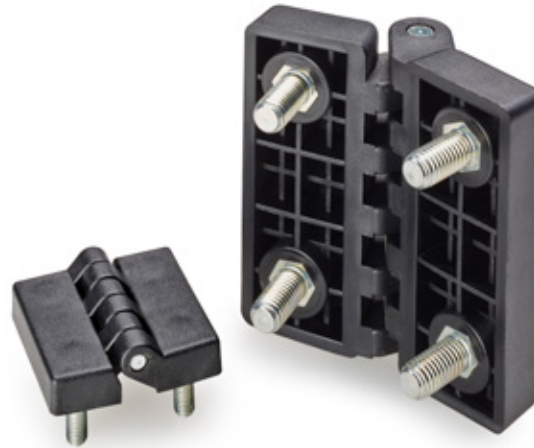
Colour:
Black (RAL 9011).

Inserts:

- Zinc plated steel pin.
- Zinc plated steel threaded stud (tolerance 6g).

SPECIAL REQUESTS:

- It is possible to supply inserts in different materials, on request and for quantities.
- It is possible to supply colours as shown in the table on page O-19, on request and for quantities.



| art. | la | lb | A | B | h | H | d2 | d3 | d1 6g | Q | Δg | F1 (N) | F2 (N) |
|--------------------|----|----|----|----|------|------|----|----|-------|----|------------|--------|--------|
| ● O43130.TM05X1501 | 30 | 30 | 48 | 48 | 10,5 | 15,5 | 5 | 10 | M05 | 15 | 49 | 1780 | 1370 |
| ● O43130.TM06X1501 | 30 | 30 | 48 | 48 | 10,5 | 15,5 | 5 | 10 | M06 | 15 | 52 | 1780 | 1370 |
| ● O43140.TM06X2001 | 40 | 40 | 64 | 64 | 13 | 19 | 5 | 12 | M06 | 20 | 90 | 4120 | 1760 |
| ● O43140.TM08X2001 | 40 | 40 | 64 | 64 | 13 | 19 | 5 | 12 | M08 | 20 | 100 | 4120 | 1760 |
| ● O43160.TM08X2001 | 60 | 63 | 95 | 95 | 19 | 28,5 | 8 | 18 | M08 | 20 | 260 | 4900 | 1275 |
| ● O43160.TM10X2001 | 60 | 63 | 95 | 95 | 19 | 28,5 | 8 | 18 | M10 | 20 | 278 | 4900 | 1275 |